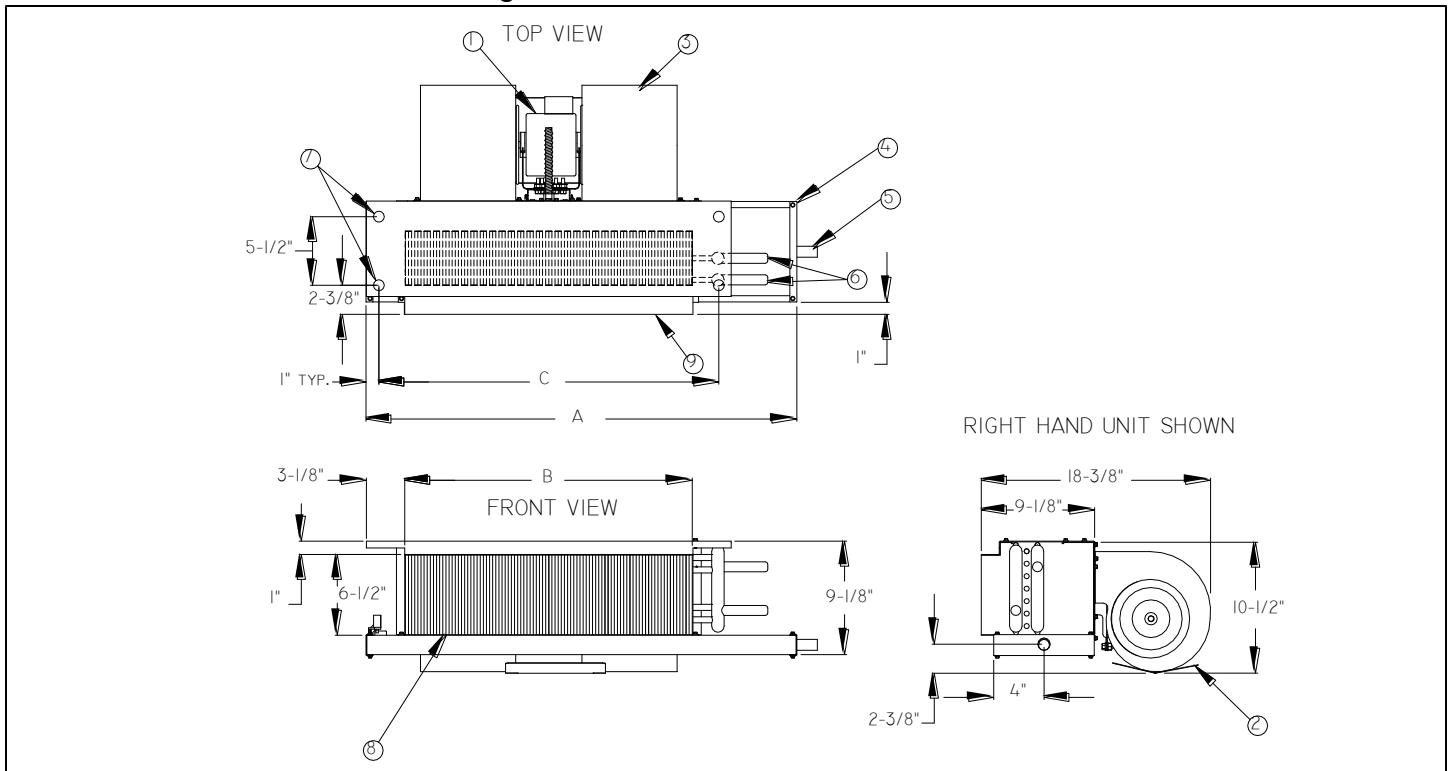


BHO

Horizontal Basic Concealed Ceiling



Model	Dimensions (inches)				Approx. Weight (lb)
	A	B	C	D	
BHO02	25 1/2	14 1/4	18 1/4	5/8	43
BHO03	28 1/2	17 1/4	21 1/4	5/8	52
BHO04	34 1/2	23 1/4	27 1/4	5/8	65
BHO06	43 1/2	32 1/4	36 1/4	5/8	76
BHO08	51 1/2	40 1/4	44 1/4	5/8	85
BHO10	61 1/2	50 1/4	54 1/4	7/8	115
BHO12	71 1/2	60 1/4	64 1/4	7/8	118

1. Unit motor
2. Spark capture plate
3. Unit blower(s)
4. Condensate pan
5. Drain connection - 3/4" MNPT
6. Chilled water connections (supply and return)
O.D. = 'D'; Hot water connections = 5/8" O.D.
7. Mounting holes with rubber grommets
8. Coil assembly
9. Supply air duct collar

Accessories (Optional)

Check if provided.

- Thermostat _____
- Control Transformer & Fan Relays
- Aquastat Changeover Switch

- Unit Disconnect Switch
- Fuse

This submittal is meant to demonstrate general dimensions of this product. The drawings are not meant to detail every aspect of the product. Drawings are not to scale. Superior Rex reserves the right to make changes without written notice.

Accessories (Optional)

Coil - 3/8" O.D. Copper Tube; 10 Fins/Inch Aluminum, Sine Wave

2-Pipe

- 2-Row (STD.)
 3-Row (STD.)
 4-Row
 5-Row

4-Pipe (Cooling Rows/Heating Rows)

- 2/1-Row
 3/1-Row
 3/2-Row
 4/1-Row
 Chilled Water Cooling
 Hot Water Heating
 Glycol Cooling
 Glycol Heating

Motor

Motor(s) – 3-speed PSC

Standard
115V/60Hz/1ph

Model	HP	Total Amps
BHO02	$\frac{1}{20}$	0.8
BHO03	$\frac{1}{20}$	0.8
BHO04	$\frac{1}{20}$	0.8
BHO06	$\frac{1}{10}$	1.5
BHO08	$\frac{1}{10}$	1.5
BHO10	2 x $\frac{1}{10}$	2 x 1.5
BHO12	2 x $\frac{1}{10}$	2 x 1.5

Optional:

- 208V/60Hz/1ph
 230V/60Hz/1ph
 277V/60Hz/1ph

Features:

- Automatic Reset
- Thermal Overload Protection System

Electric Heat – Single Phase (Optional)

Heater Voltage

- 115V
 208V
 230V
 277V

		Electric Heater kW Primary or Supplementary			
		115 Volts	208 Volts	230 Volts	277 Volts
Size	Blowers	Min-Max kW	Min-Max kW	Min-Max kW	Min-Max kW
02	1	1-2 kW	1-2 kW	1-2 kW	1-2 kW
03	1	1-3 kW	1-3 kW	1-3 kW	1-3 kW
04	2	1-4 kW	1-4 kW	1-4 kW	1-4 kW
06	2	1-4 kW	1-6 kW	1-6 kW	1-6 kW
08	2	1-4 kW	1-8 kW	1-8 kW	1-8 kW
10	4	2-4 kW	2-9 kW	2-10 kW	2-10 kW
12	4	2-4 kW	2-9 kW	2-10 kW	2-12 kW

This submittal is meant to demonstrate general dimensions of this product. The drawings are not meant to detail every aspect of the product. Drawings are not to scale. Superior Rex reserves the right to make changes without written notice.

All rights reserved. No part of this work may be reproduced or transmitted in any form or by any means, electronic or mechanical, including photocopying and recording, or by any information storage retrieval system without permission in writing from Air Distribution Technologies.

Condensate Pan

- | | |
|--|--|
| <input type="checkbox"/> Galvanized (STD.) | <input type="checkbox"/> Safety Overflow Float Switch* |
| <input type="checkbox"/> Safety (Two) Drain Connection | |
| <input type="checkbox"/> Extension Plate | |
| <input type="checkbox"/> Mastic Coating | |
| <input type="checkbox"/> Stainless Steel Inner Layer | |

Description: Inner and Outer Layer of 18 gauge Galvanized Sheet Metal with One - Inch Internal Insulation

*24V, requires transformer and fan relay if not obtained with a 24V thermostat.

Valves and Valve Accessories

- | | |
|--|--|
| <input type="checkbox"/> Shut - Off Valve(s) | <input type="checkbox"/> Strainer(s) |
| <input type="checkbox"/> Shut - Off Valve w/ Memory Stop | <input type="checkbox"/> Manual Flow Control Valve(s) |
| <input type="checkbox"/> 2 - Way Motorized Valve | <input type="checkbox"/> Automatic Flow Control Valve(s) |
| <input type="checkbox"/> 3 - Way Motorized Valve | <input type="checkbox"/> Unions |
| <input type="checkbox"/> 2 - Way Modulating Valve | <input type="checkbox"/> Pete's Plug(s) |

General Description

- This horizontal discharge fan coil unit is designed for concealed applications above drop ceilings or over closets. Typical installations are in hotels, motels, condominiums and general commercial applications.
- Exterior fabricated of 18 gauge galvanized steel with 1/2" matte-faced liner for maximum thermal and acoustical insulation.
- Removable motor/blower assembly.
- Throwaway filter.
- Manual air vent.
- System charged with air to insure a leak free arrival at the job site.

This submittal is meant to demonstrate general dimensions of this product. The drawings are not meant to detail every aspect of the product. Drawings are not to scale. Superior Rex reserves the right to make changes without written notice.

All rights reserved. No part of this work may be reproduced or transmitted in any form or by any means, electronic or mechanical, including photocopying and recording, or by any information storage retrieval system without permission in writing from Air Distribution Technologies.